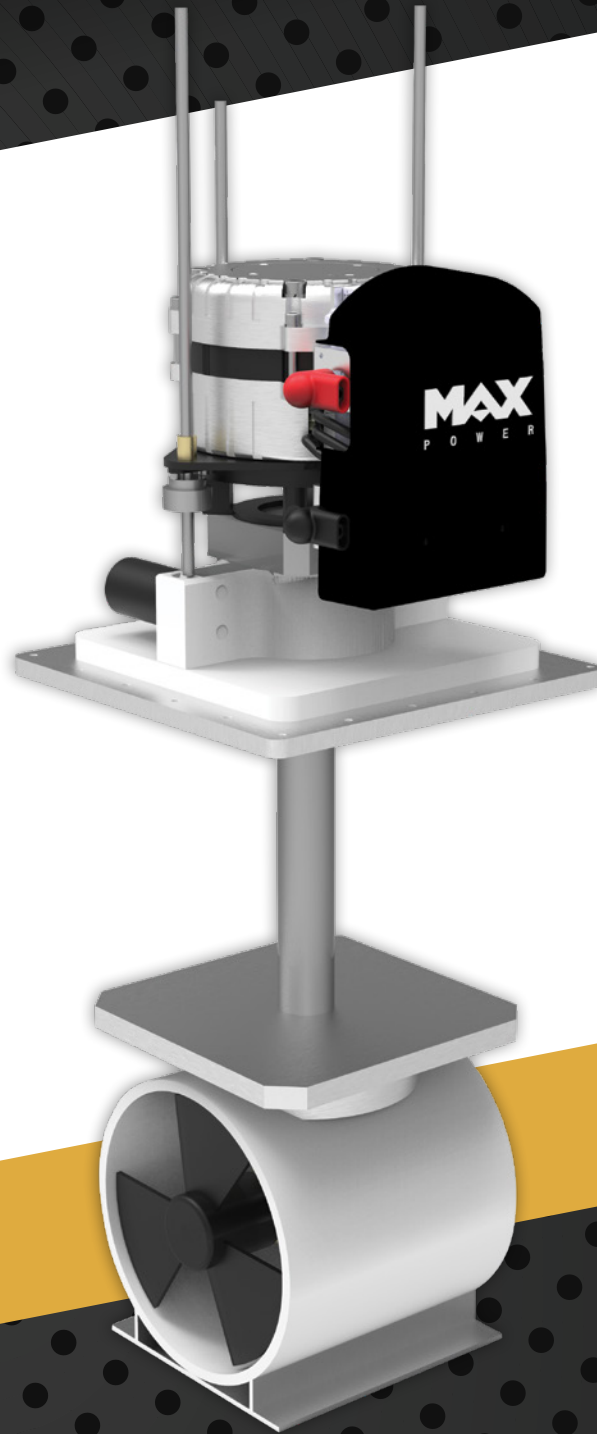


MAX

P O W E R
CONTROL TO THE MAX

NEW SERIES



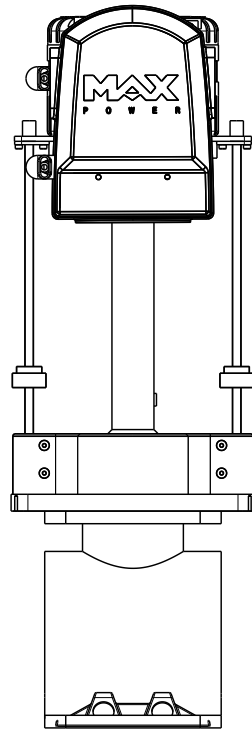
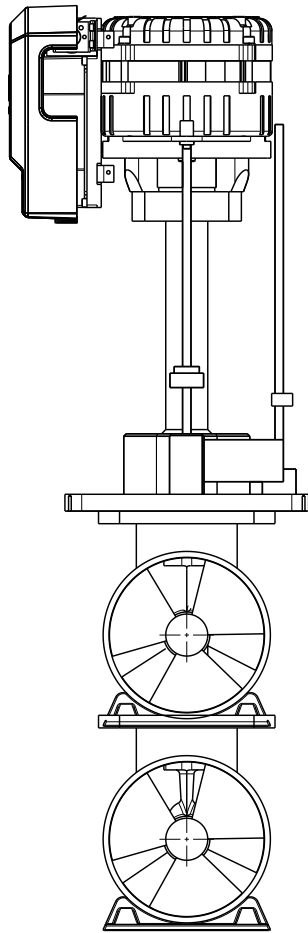
VIP **ECO** PROPORTIONAL

www.max-power.com

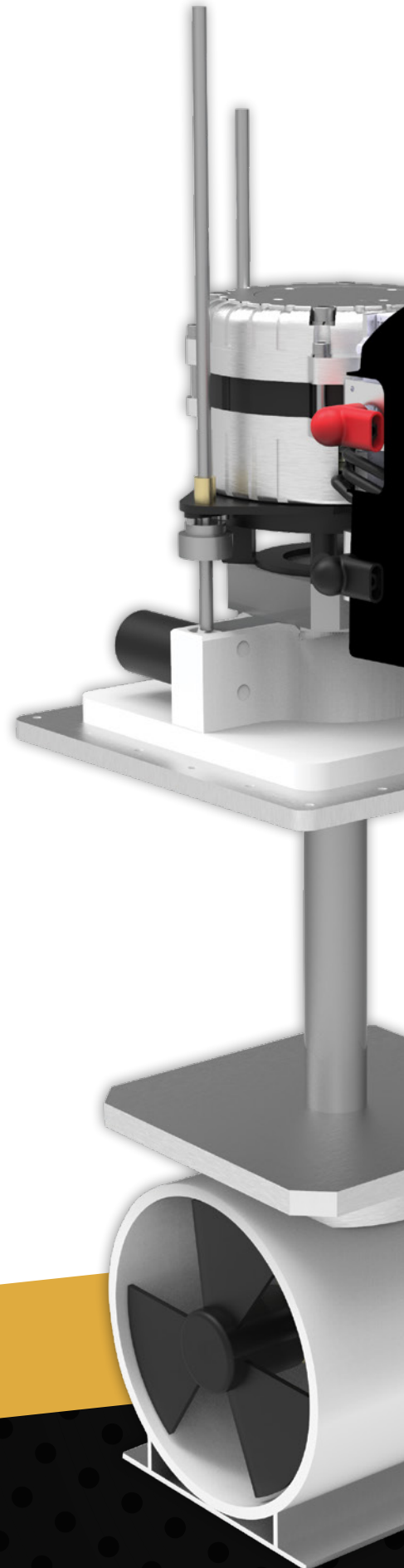
NEW SERIES

VIP **ECO** PROPORTIONAL

- ECO FRIENDLY
- FULLY PROPORTIONAL CONTROL
- UNLIMITED RUNTIME*
- COMPACT AND LIGHTWEIGHT



Made in EU



*Until the battery runs out

- Slightly reduced height due to brushless motor
- Immediate retraction / deployment as soon as the thruster is activated / deactivated
- Smart RPM reduction in cases of undervoltage
- Undervoltage / overvoltage limits being set to 65%/ 150% offering uninterrupted operation
- CAN Bus protocol
- Bronze drive leg ensuring strength and smooth operation (VIP 250 model only)

BACKED BY OUR TEAM OF EXPERTS
for installation, maintenance, and repair services

Included

Proportional Joystick

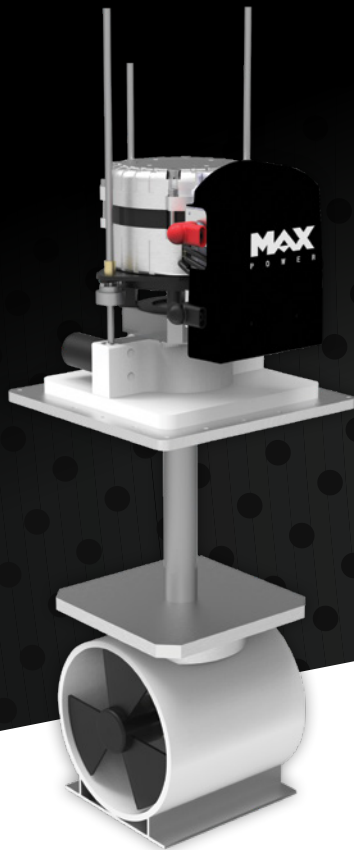
Precise accuracy
with new joystick



Application
Modern mobile
application for
monitoring



VIP **ECO** PROPORTIONAL



MAX
POWER
CONTROL TO THE MAX

Model	VIP 150 ECO		VIP 250 ECO			
Code	636764	600126	636765	600127	636839	636827
Voltage (V)	24	48	24	48	24	48
Thrust (Kg)	110	130	145	145	250	250
Propellers	Duo	Duo	Duo	Duo	Duo	Duo
Power (KW/hp)	6 / 8	8 / 10,7	9 / 12		15 / 20	
Drive Leg (material)	Composite		Bronze		Bronze	
Tunnel Ø (mm)	185		250		250	
Weight (kg)	47		58		58	
A (mm)	356		391		391	
B (mm)	290		360		360	
C (mm)	602		653		713	
D (mm)	860		970		1030	
E (mm)	240		295		295	
Boat type	Boat Length (Feet / Metres)					
Heavy Displacement High Windage Cruising	30' - 40' / 9 - 12m	33' - 43' / 10 - 13m	35' - 45' / 10,5 - 13,5m		60' - 90' / 18' - 27' m	
Medium Displacement Medium Windage Fast Cruising	35' - 44' / 10,5 - 13m	38' - 48' / 11,5 - 14m	39' - 50' / 11,5 - 15m		74' - 100' / 22' - 30' m	
Light Displacement Light Windage Super Fast Cruising	36' - 47' / 11 - 14m	39' - 51' / 11,8 - 15,5m	40' - 51' / 12 - 15,5m		77' - 105' / 23' - 32' m	

